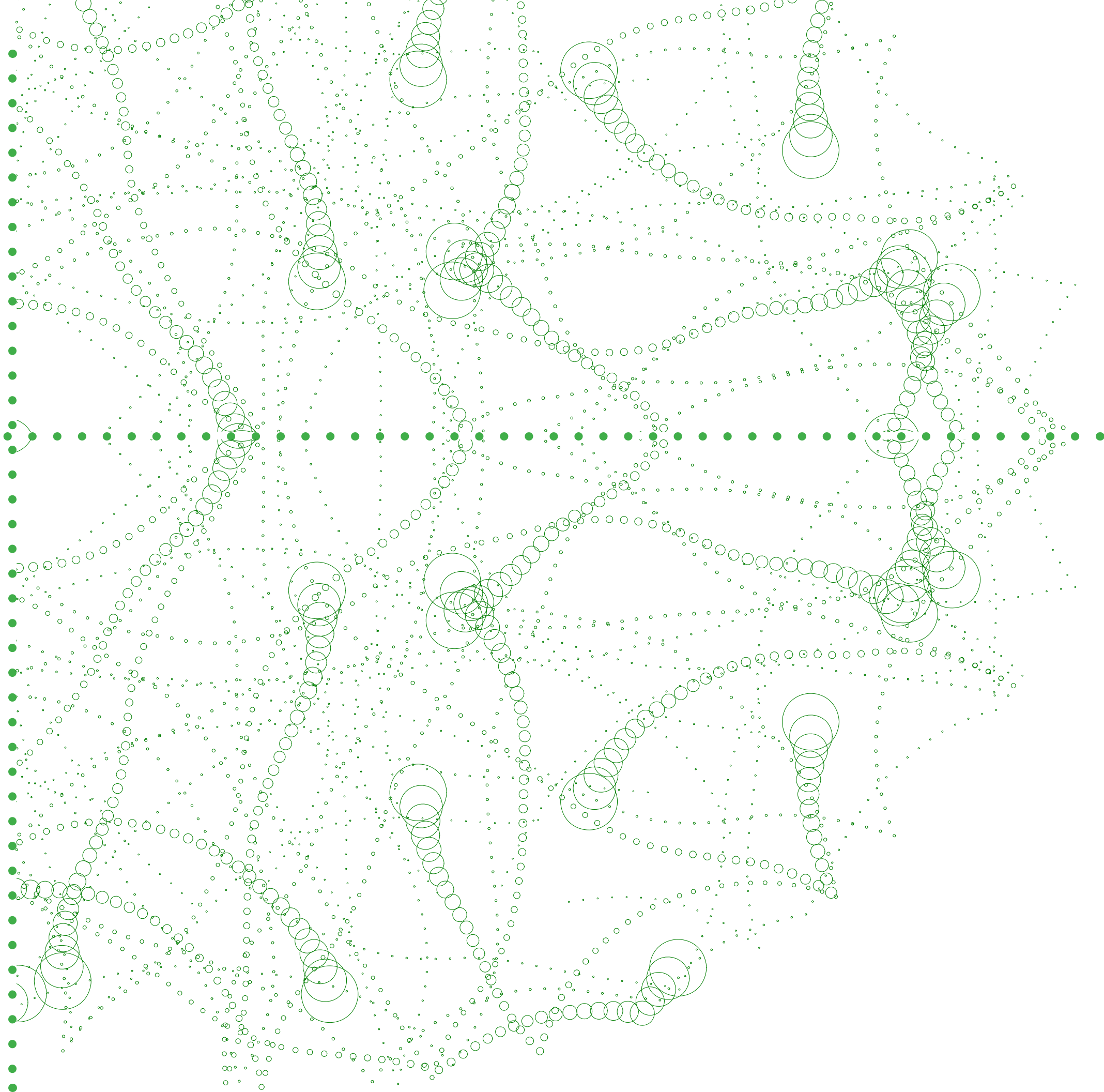
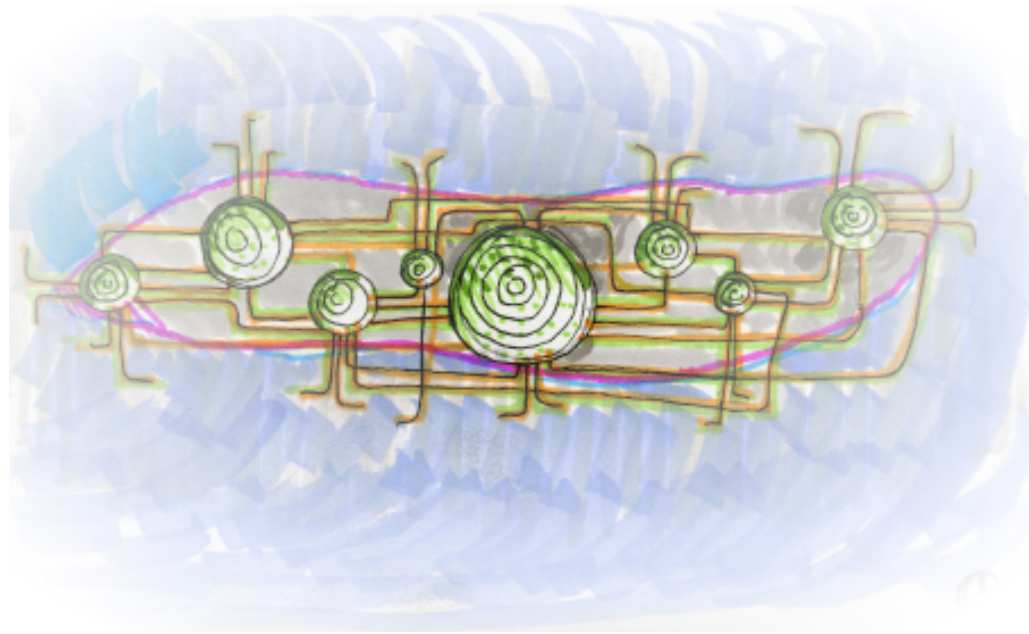
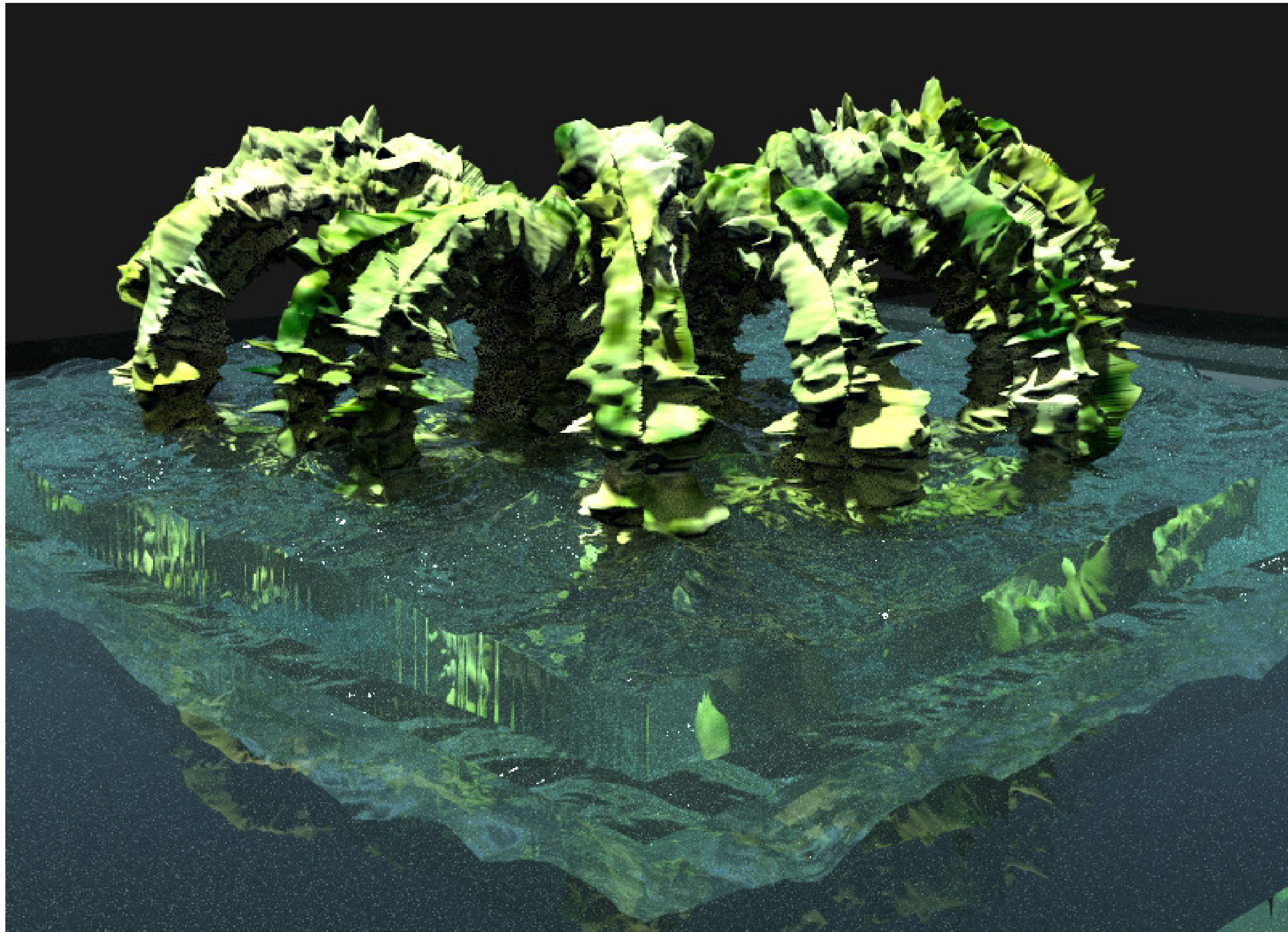


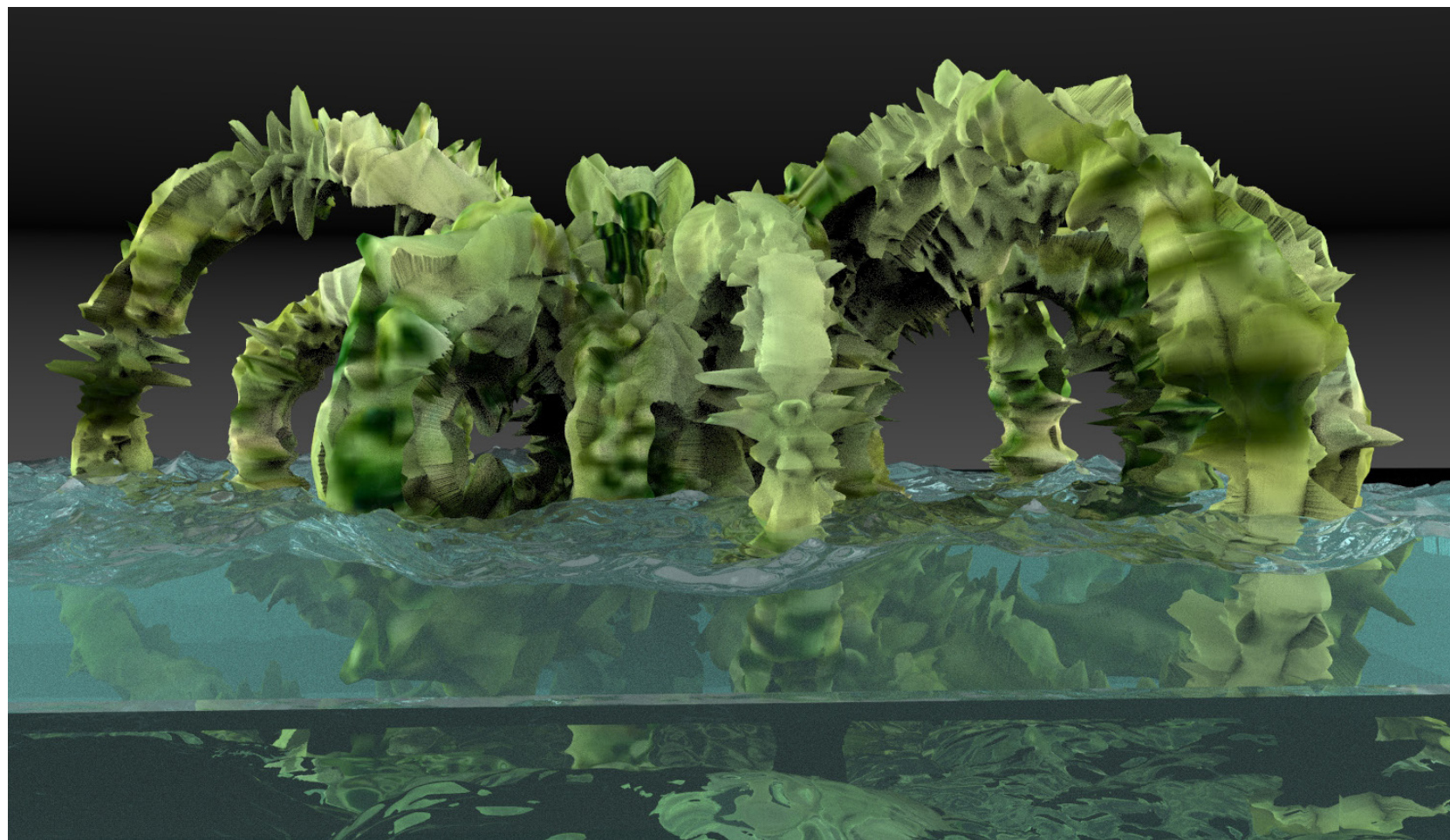
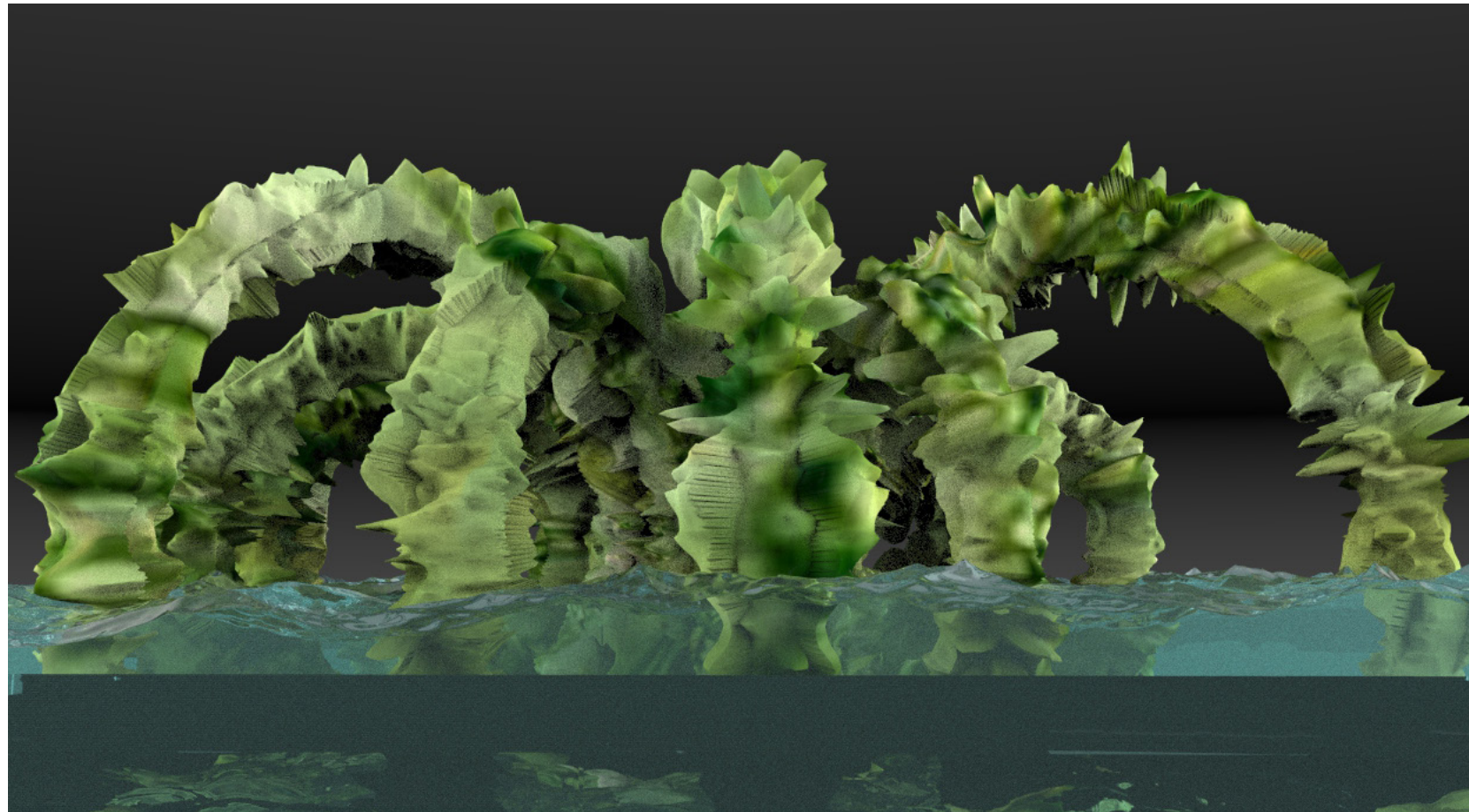
Assignment 3

Algae Biofuels
eco-MACHINE

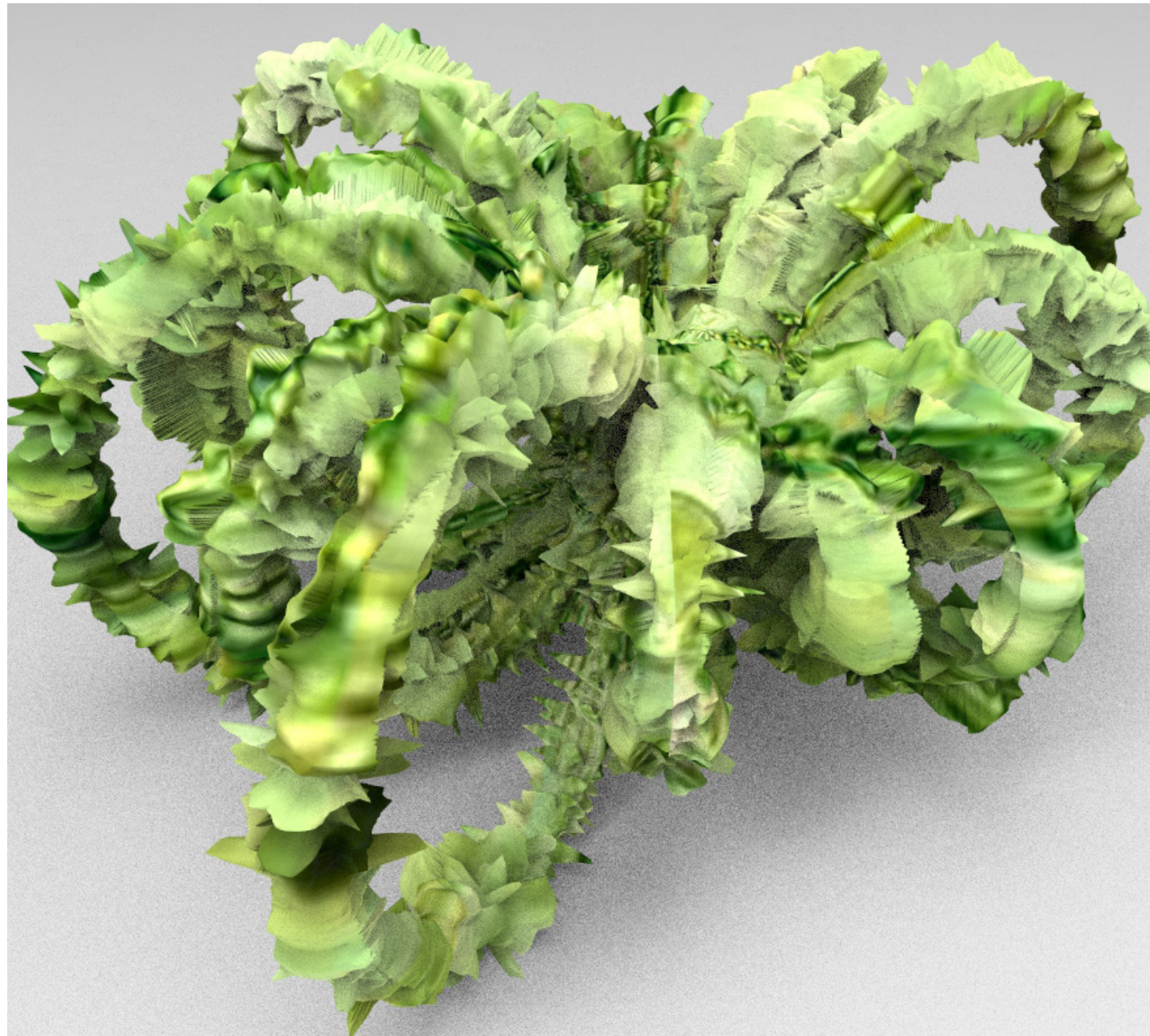
Sean McGadden

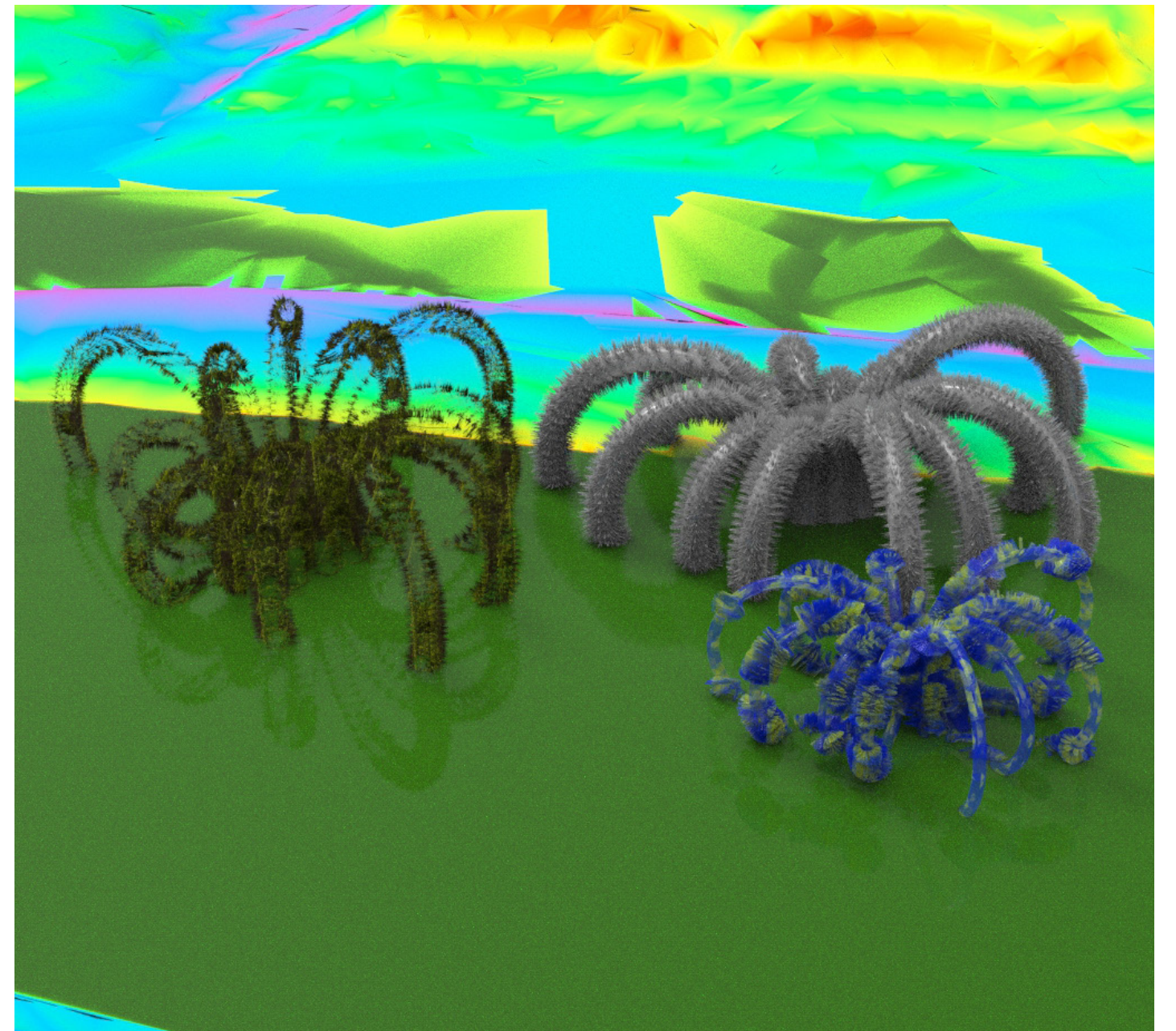


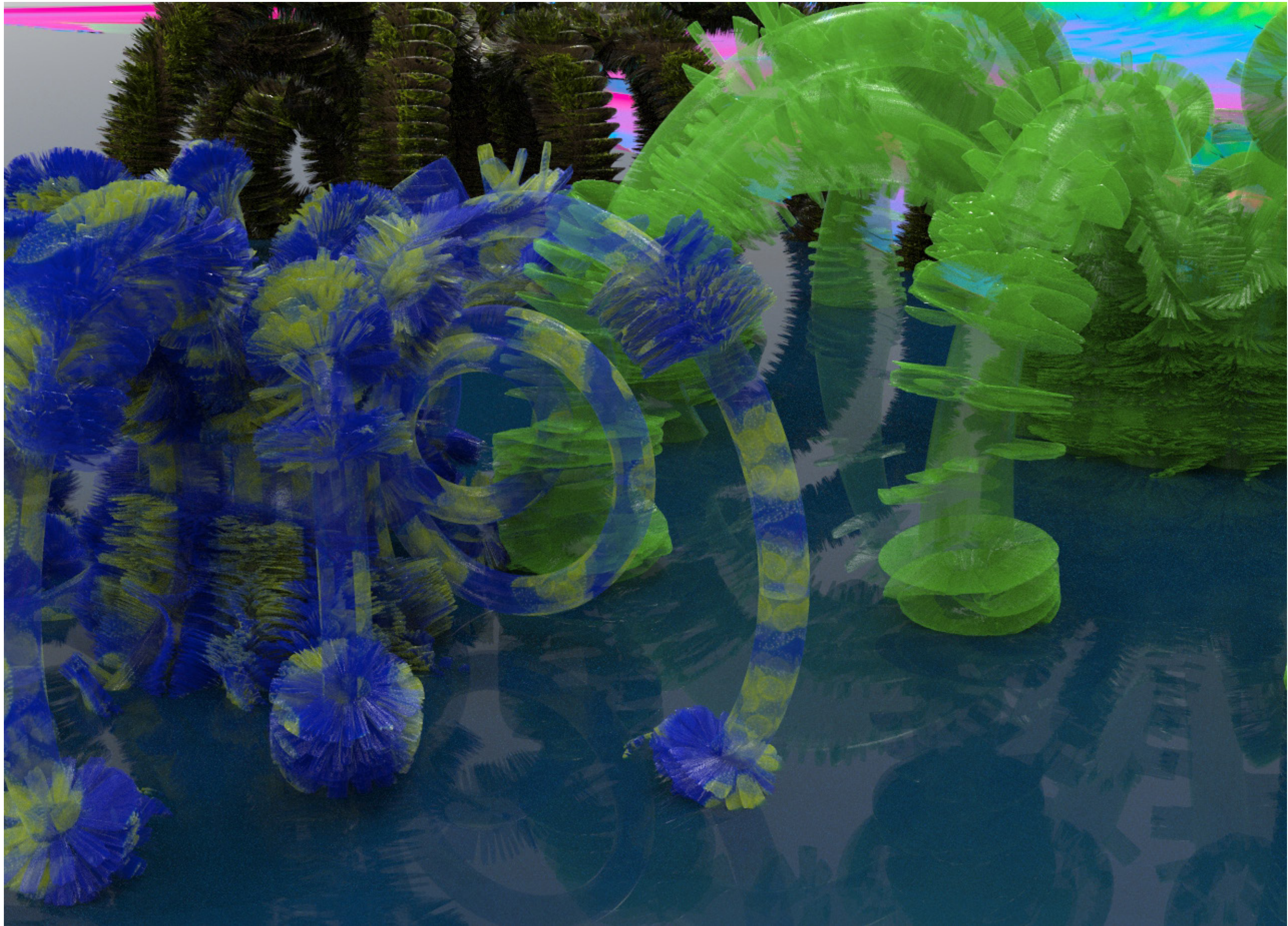


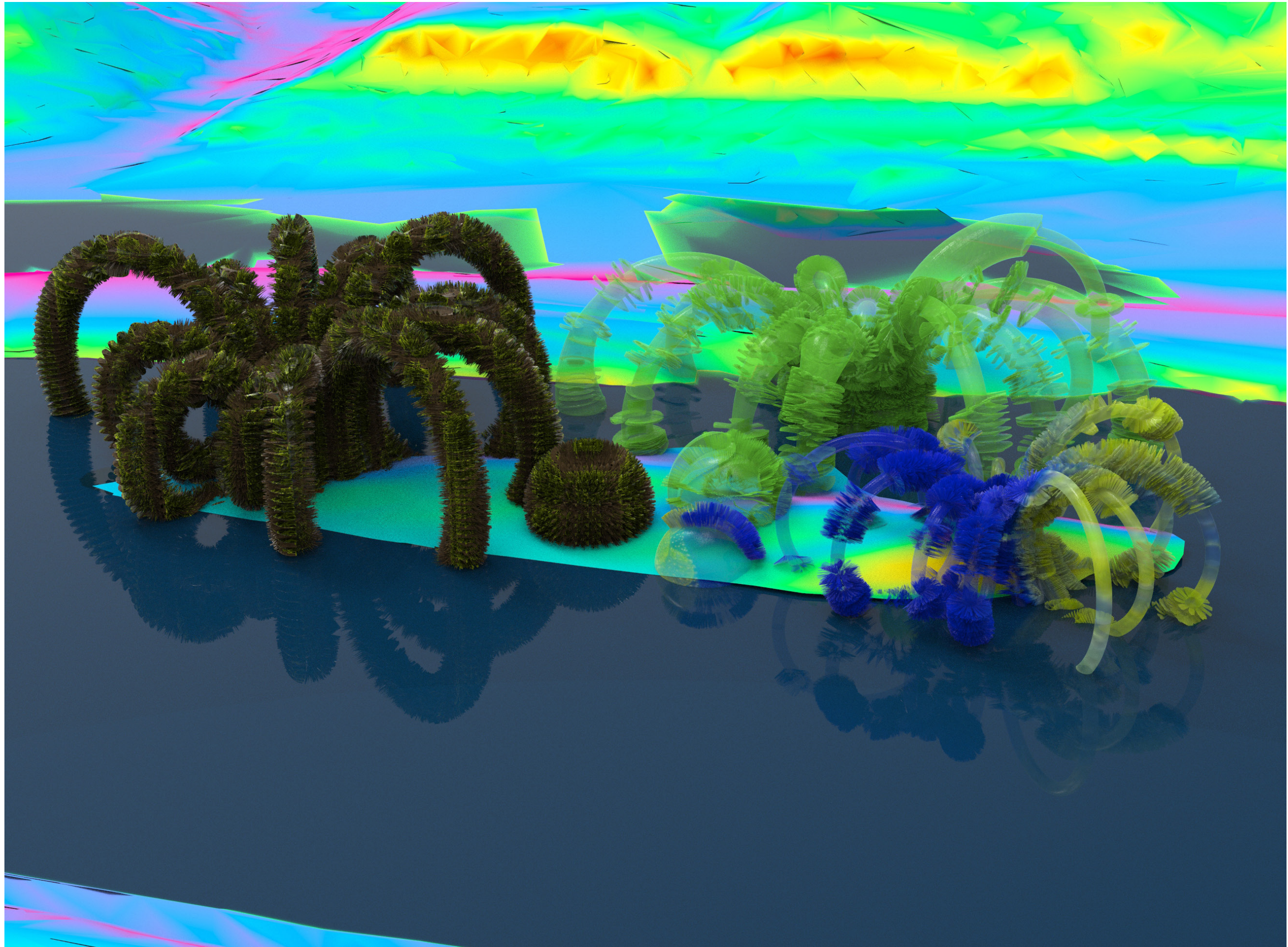


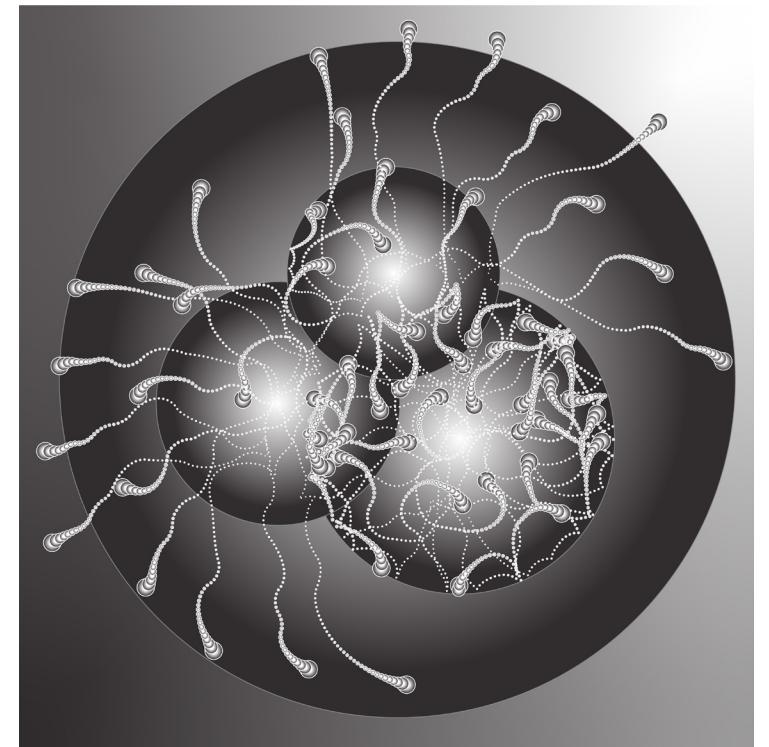
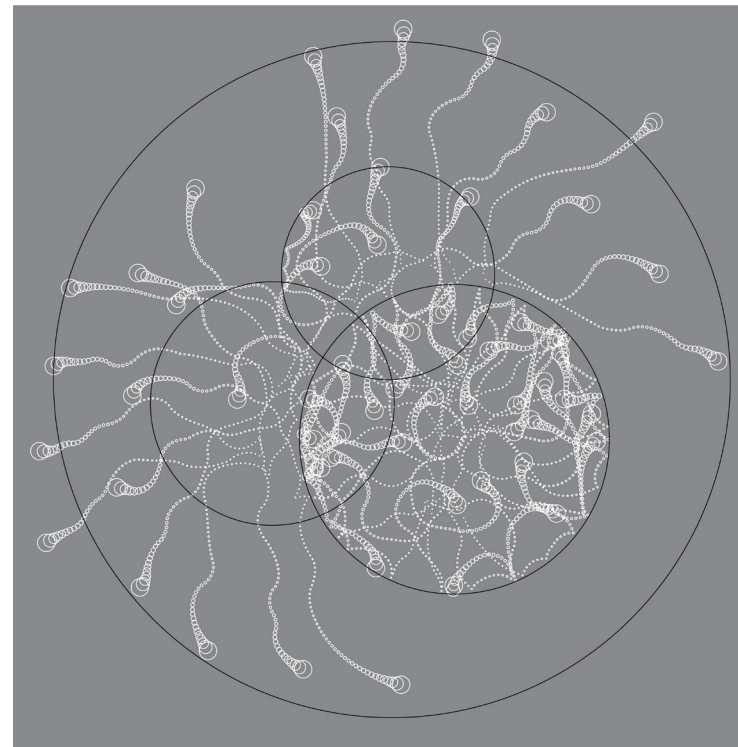
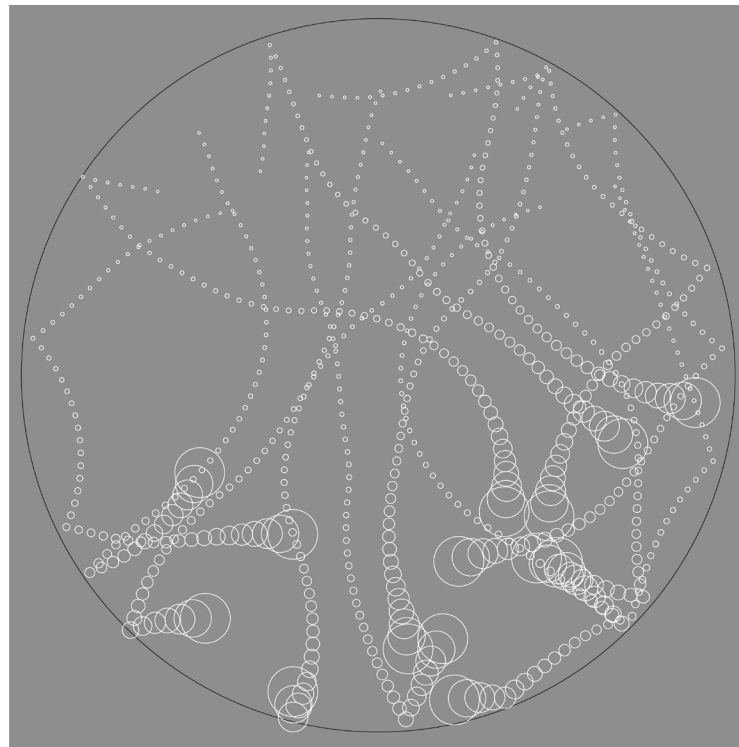
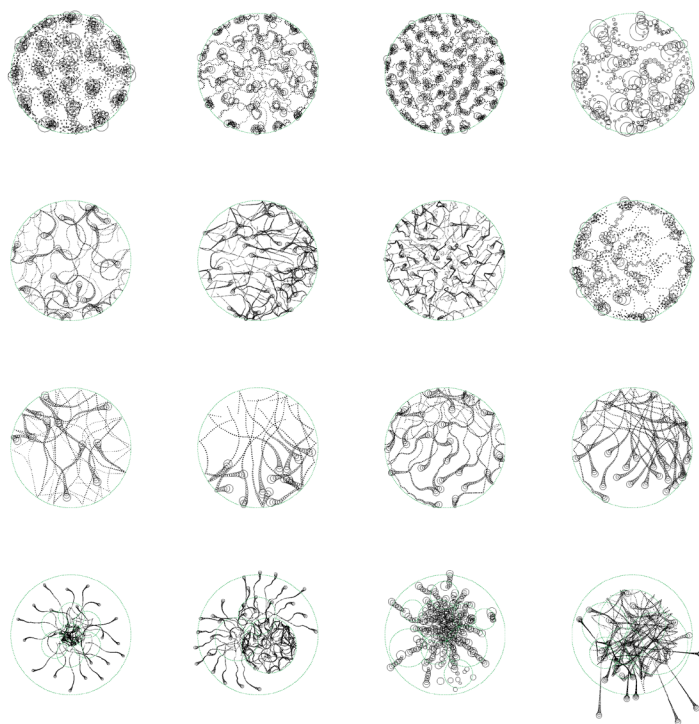
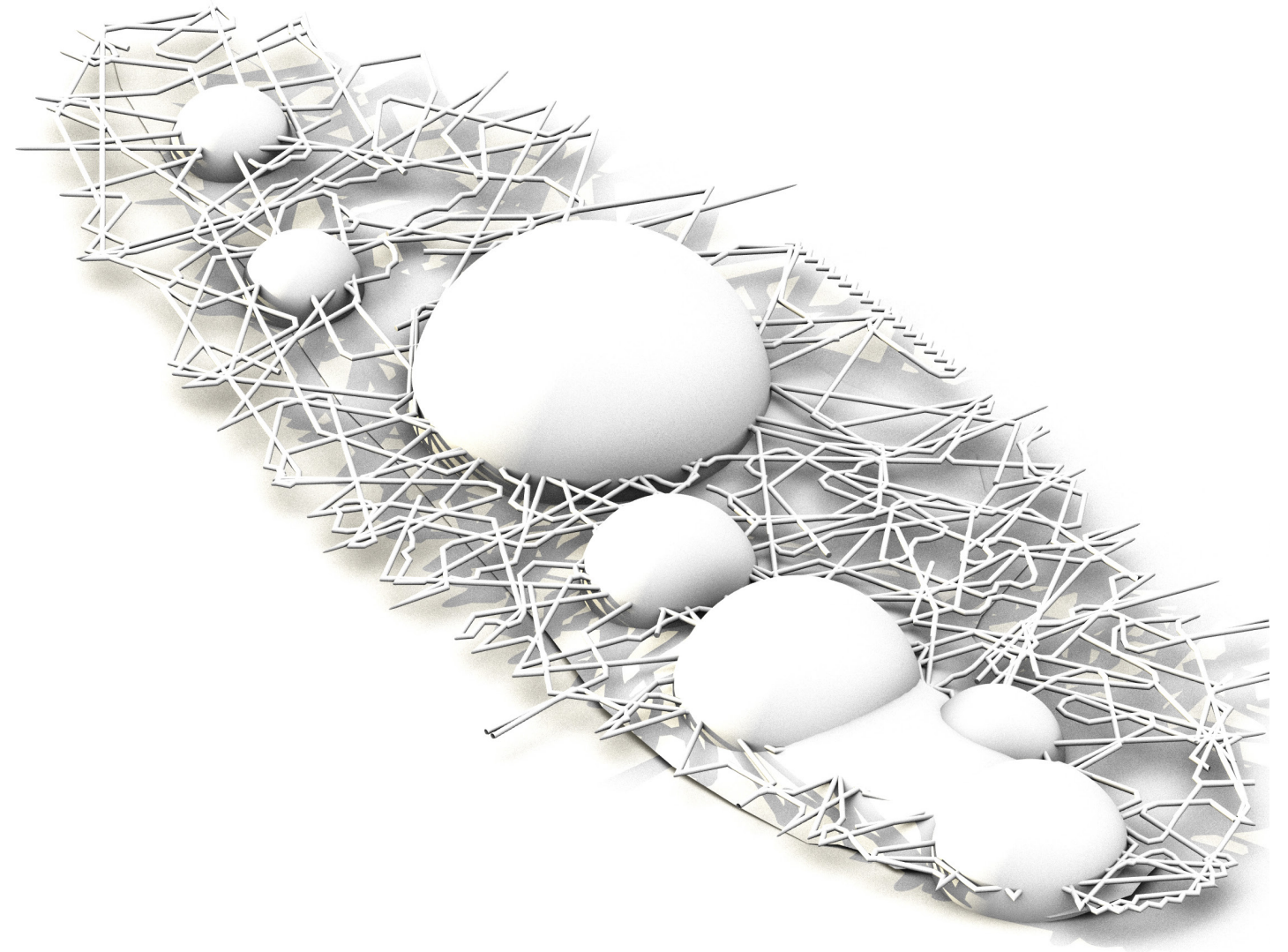
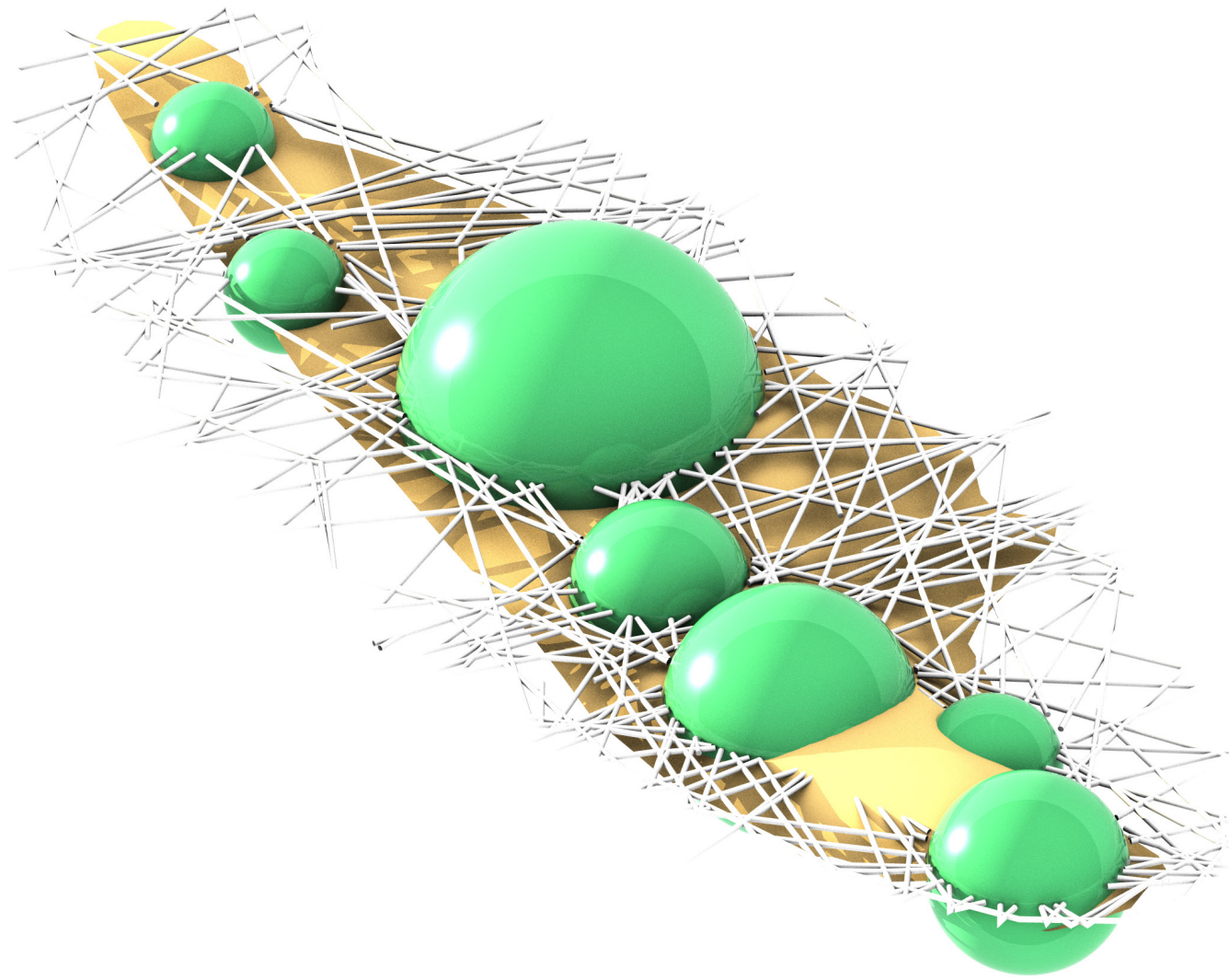
Greenfinger a brilliant outcast of society is forced to leave the natural and scientific splendor of Baton Rouge and the Gulf Coast due to the devastation of rising tides and flooding. He travels upstream to reach an island on Mile 6 of the Allegheny River. Our architect of humanity establishes a weather station and laboratory built from the remanence of a society that disregarded its own affordances. His facility sequentially evolved over a 20 year period to research alternative energy in a resource strapped world as well as monitor and forecast weather patterns. He would attempt to build a new city focused on sustainable practices and create reenergized institutions of education, research, livelihood, and community that could adapt and recycle its knowledge and waste. He pursues a brighter future, one without denying destruction and its aftermath but instead engaging the waste as productive.



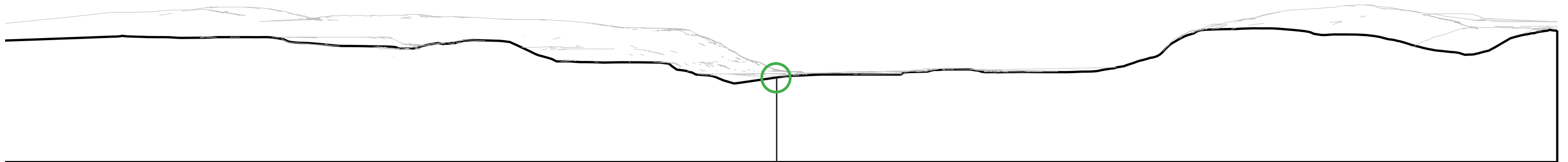
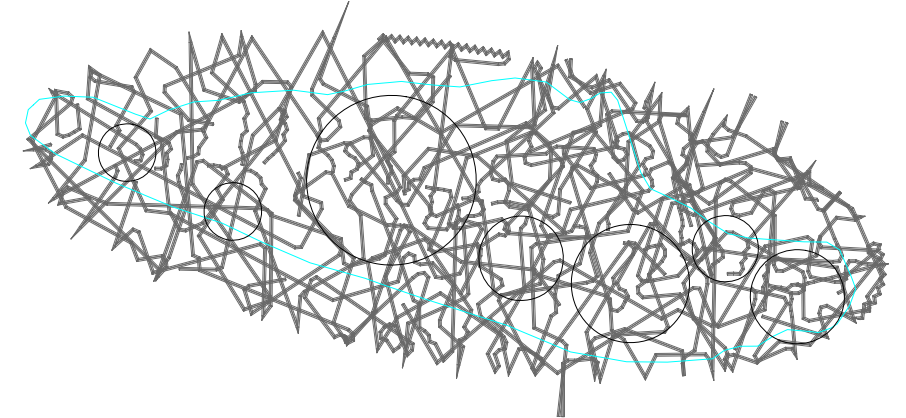
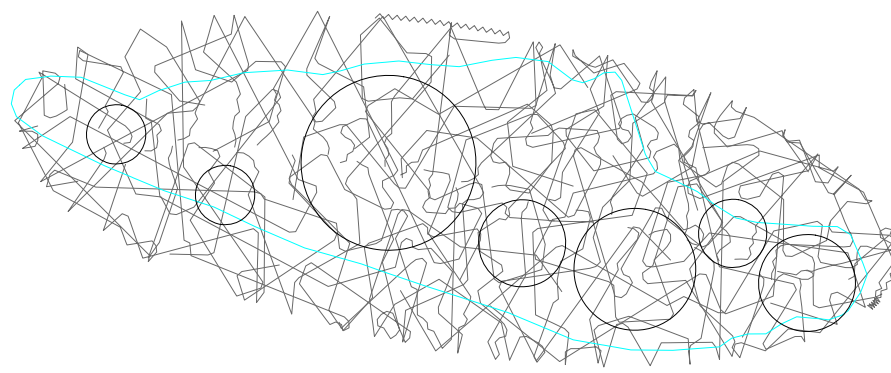
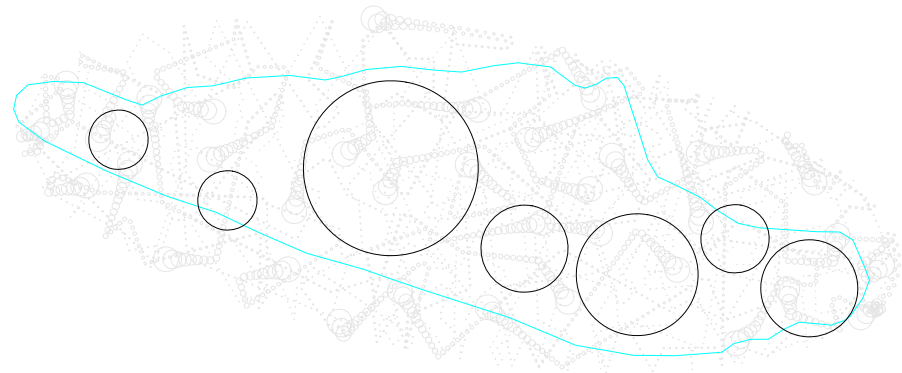
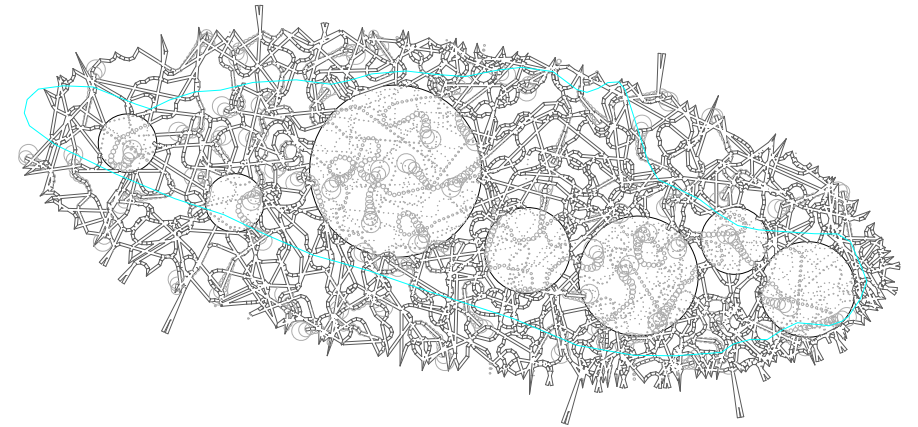
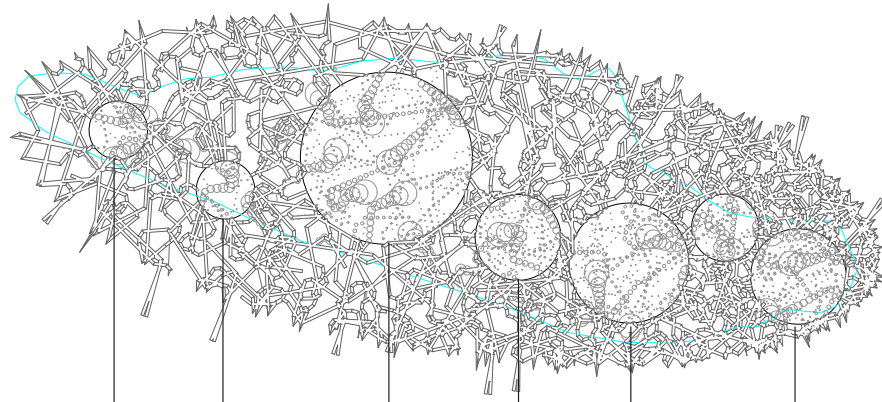
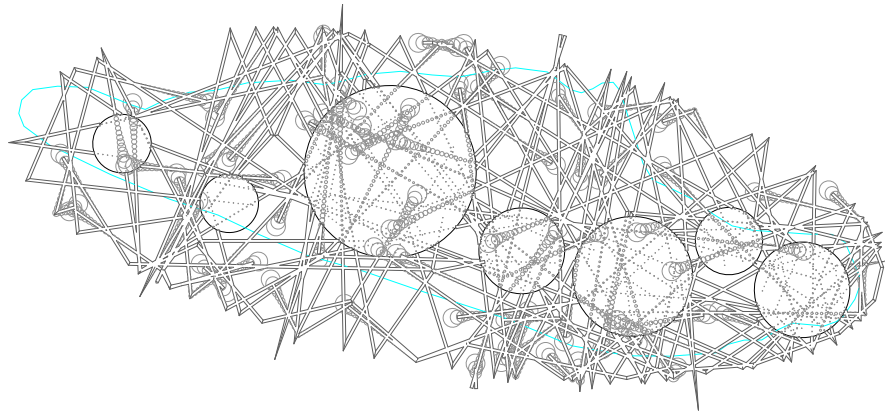


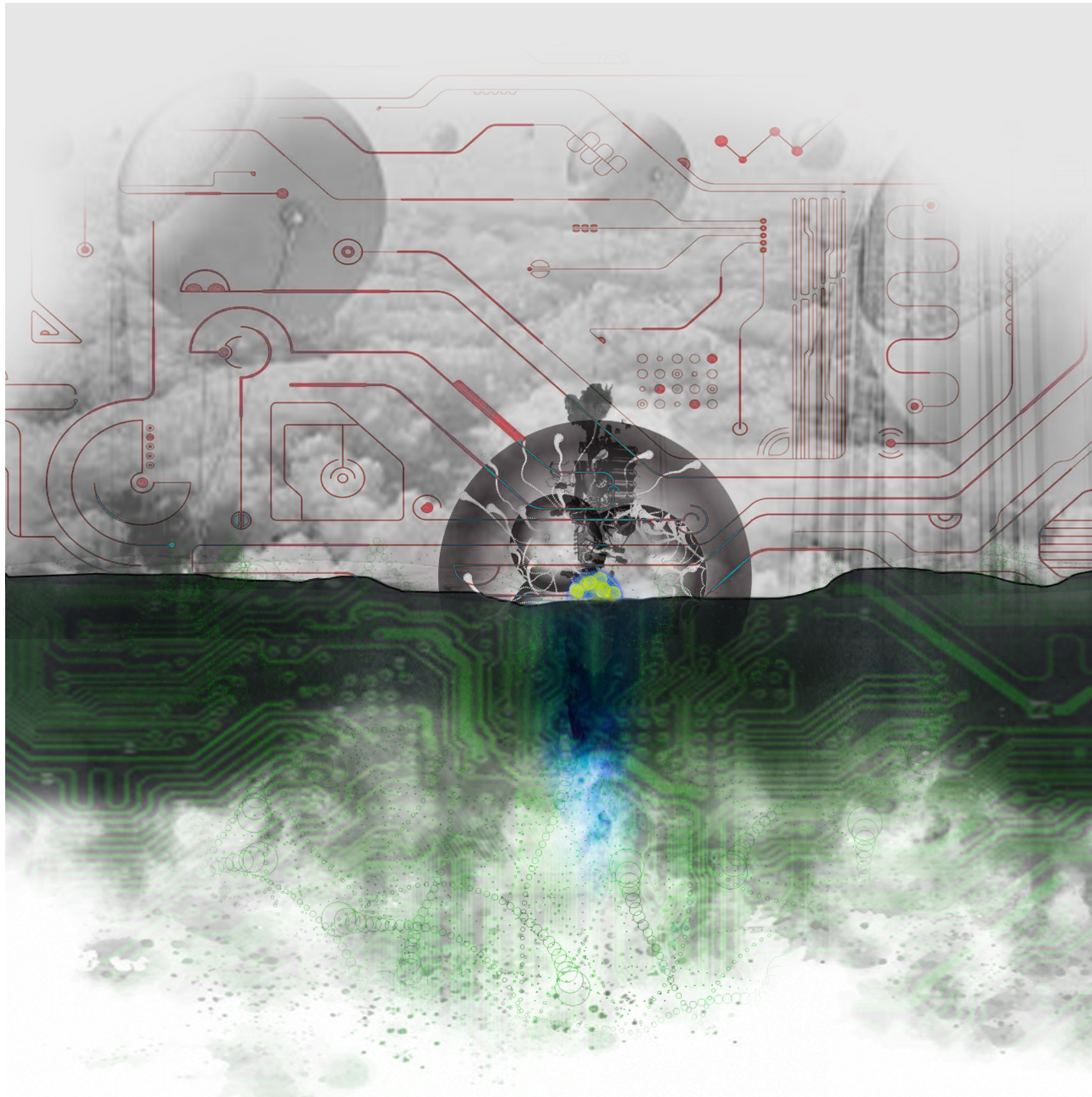






Site Diagrams





An ecological and mechanistic melange of dynamic civic, practical and generative spaces lofted upon a glacially slow moving city trying to keep up with the unyielding forces of nature that have finally overcome the ignorance of the human condition.

Industrial Ecology

Machine, Cogs, Gears, Pumps, Presses, Grinders, Pipes, Gaskets, Wires, Circuits, Treads, Wheels, Pulleys, Bands, Engines, Tanks, Motors, Waste

Natural Ecology

Trees, Parks, Plants, Pools, Flowers, Ponds, Rivers,

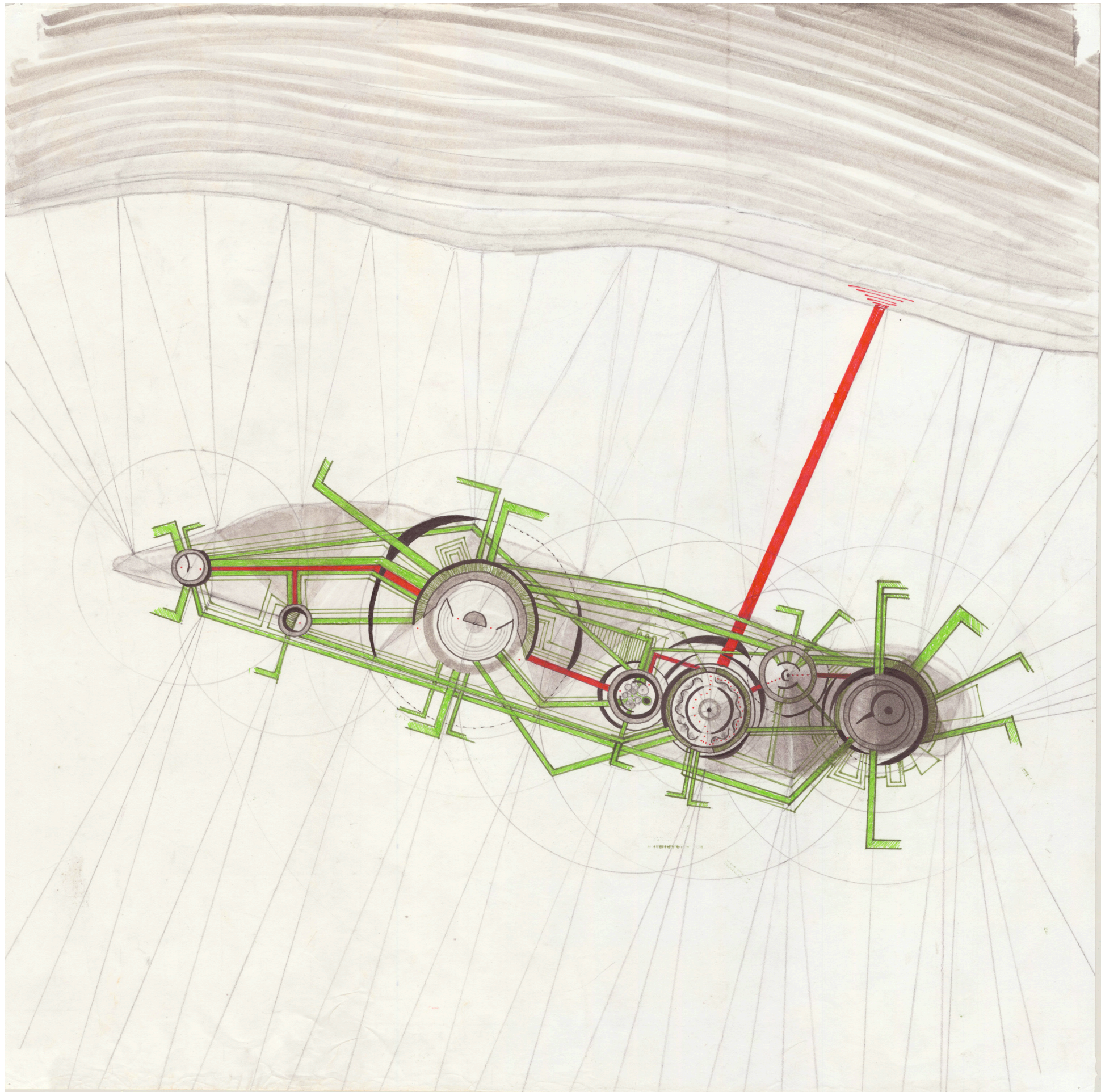
Energy Ecology

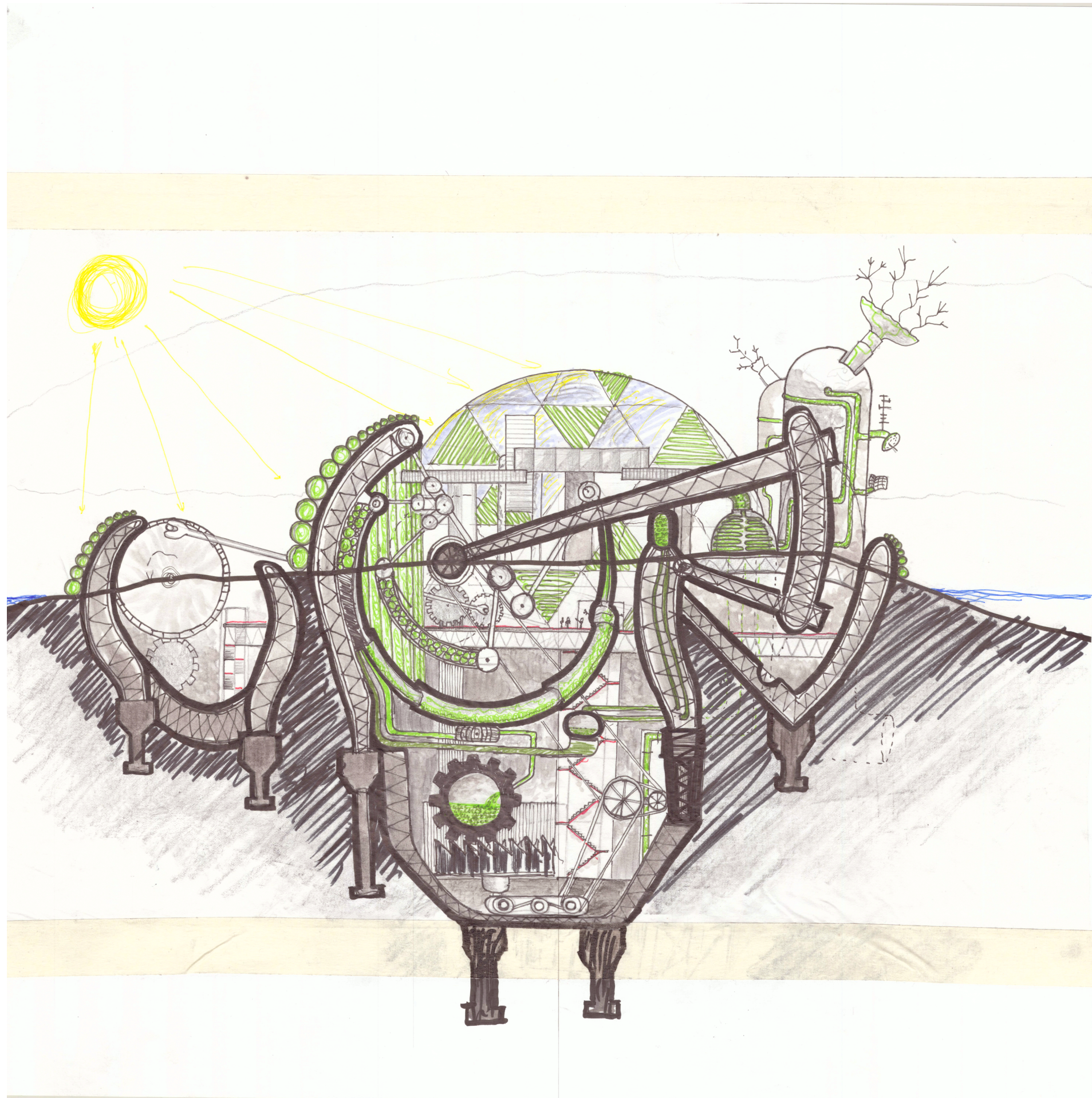
Algae, Reactors, Combustion, Biofuel, Geothermal, Hydroelectric, Turbine, Balloon, Exhaust, Steam, Waste Management

Civic Ecology

Government, Collaboration, Debate, Community, Education, Research, Recovery, Discovery,

This architectural language uses the formal alphabet of both the machine and the industrial structural system to engage with the ecosystem of the surrounding environments.





Program

Community Amphitheater

A place for debate and collaboration. This icon of democracy holds the cinematic drama from which the new society of the future will bolster its own progress. The space retains a nostalgia for that which is gone but remains in spirit. The aristotelian nature of this space is felt in its direct contrast and connection to machine and primordial overgrowth. Upon this stage, the performance of civic engagement will be backdropped by the visual conflict between man and nature. The battle for ecology serves as a constant reminder to the communities that occupy the space of disasters foreshadowed to occur if proper action is not taken.

Algae Research Laboratory

The helm of the city is the development of renewable energy. This is the pinnacle of technological advancement in a society set back scientifically and emotionally. This space overlooks the amphitheater but remains nestled among its own natural environments in quiet seclusion so the intellects and scientists do not forget who or what their inspirations serve. This space serves to harness nature for the benefit of the earth and those upon it.

Civic Facilities

These modular components offer minimalistic comfort for those survivors intent on pursuing a more sustainable future free from ignorance and neglect. The dynamic housing, educational, and leisurely collection of components serves as the feeding pond for the atoms of this colony to sustain the city and build it up bigger and stronger.

Greenfingers Suite

The cockpit of this democratic flock is both a haven of thought as well as a resting place for the architect of our new society to collect himself and lead his people to a more sustainable and tolerant future.

Subgrade Industrial Complex

The dungeons of our city is not a scary place nor is a slum of dirt and grime. It houses the sweat and toil of the people who grind away at the gears of time putting to practice those breakthroughs that are so tirelessly won in the Lab. This is a place of craftsmen and engineers who are the very foundation of society in 2050.

